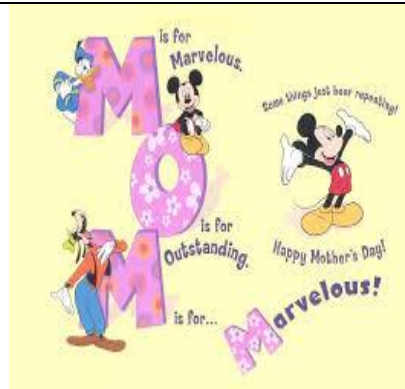
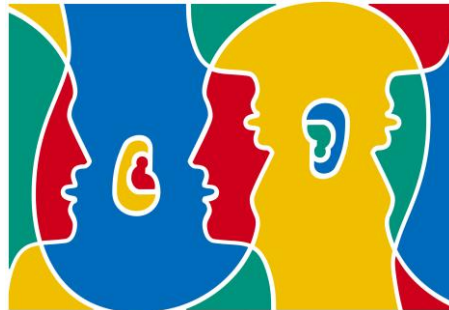


20. THE SCHOOL CALENDAR AND SCHOOL HOLIDAYS

TASK 1. Match the pictures with the descriptions of school holidays and then name the holidays.



1



2



3



4



5



6

Adapted from: <https://www.google.it/search?q>

- (A) A [Christian festival](#) and holiday celebrated in spring.
- (B) This day is marked in many countries on 22 April.
- (C) This event encourages language learning.
- (D) In Lithuania, this is celebrated on the first Sunday of May.
- (E) A Christian holiday celebrating the birth of Christ.
- (F) A special day for the appreciation of educators.

TASK 2. Which of the listed holidays are national / public / calendar holidays and which ones are special school community holidays? Complete the table as shown in the example.

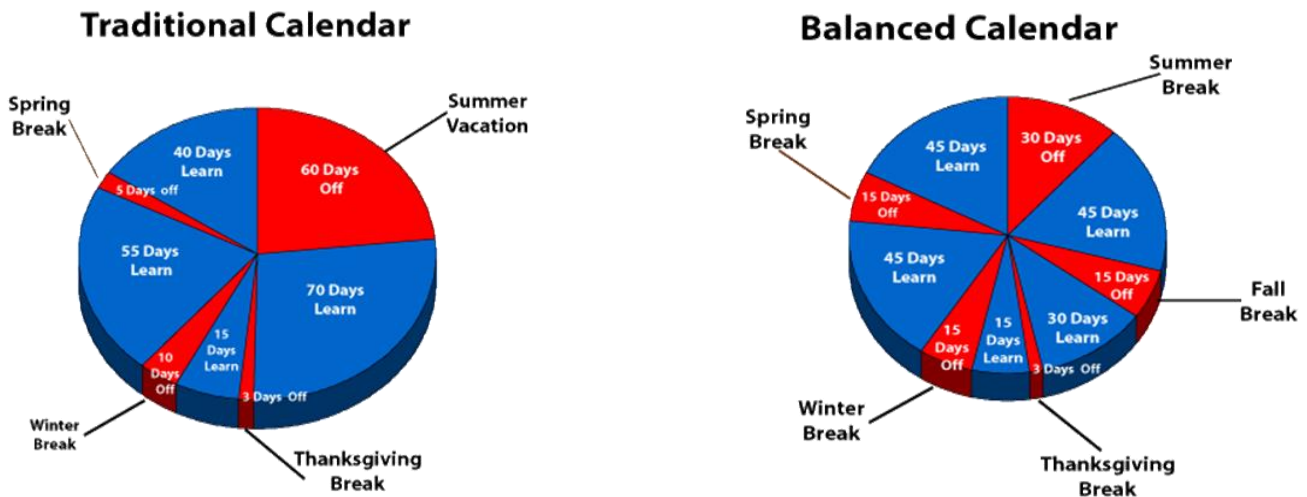
The Day of Knowledge and Learning St. John's Eve / Midsummer's Eve The Last Bell Easter Teachers' Day Independence Day Shrove Tuesday Christmas and New Year 100 Days Graduation Day Mother's Day Earth Day Father's Day Sports Day Parents' Day All Saints' Day Black Ribbon Day and the Baltic Way European Day of Languages	
National / public / calendar holidays	School community holidays
	<i>The Day of Knowledge and Learning</i>

TASK 3. Look at the pie charts and read the text. Are these statements TRUE (T) or FALSE (F)?

1. The number of in-school days is bigger in the traditional calendar. (T/F)
2. The traditional calendar has fewer breaks than the balanced calendar. (T/F)
3. Thanksgiving Break is the same in both calendars. (T/F)
4. In the balanced calendar, summer vacation is twice as long as in the traditional one. (T/F)
5. There are more periods for learning in the balanced calendar. (T/F)

CALENDAR COMPARISONS

The charts below show the distribution of days *in-school* and days *on break* on the nine-month traditional calendar and the distribution of such days on a modified or balanced calendar. Weekends are excluded from the charts. Both models show a typical year of 258 work days (Monday through Friday). Both charts represent a standard school year of 180 days.



The traditional calendar has a long summer vacation followed by a long period of in-school days, with the first break coming at Thanksgiving. Short winter holidays are followed by 55 in-school days before a very short spring break. Spring break is followed by 40 work days before the end of the school year.

The balanced calendar is slightly different. In the balanced calendar, the long summer break is reduced and days on-break are distributed throughout the school year. The breaks are more frequent and longer, and the periods of in-school days are shorter.

Adapted from: http://www.nayre.org/calendar_comparison.htm

TASK 4. Find the words in the text to match the following definitions:

1. A vacation from school or college during the spring term, lasting about a week.
2. A day of giving thanks for the blessing of the harvest and of the preceding year.
3. Months of the year during which school is open and attendance is required.
4. The longest break from school.
5. A short break after a working week.

TASK 5. Cloze. Complete the passage by inserting one missing word into each gap. The words are NOT given.

- In all countries, the longest (1) in the school year is during the (2), lasting between 5 and 14 weeks. In some (3), for example, Ireland, Italy, Lithuania, Russia, summer (4) are normally three months long, compared to holidays which are six to eight (5) long in Britain, The Netherlands or Germany.
- In Lithuania, summer holiday for the 9th and 11th (6) begins a few days later than for the 10th and 12th grade students. This is due to exams for those grades. In Lithuania once it was officially only around 70 (7) of holiday for upper grades, but now it's almost the whole three (8)
- In countries with a Christian religious tradition, Easter is a school holiday that takes (9) in spring, with the date varying by country and level of schooling.
- In the northern countries, Christmas holidays are shorter. In the (10) hemisphere, Christmas is celebrated in the summer holiday and the break is much longer.

Adapted from: http://en.wikipedia.org/wiki/School_holiday

ANSWERS

20. THE SCHOOL CALENDAR AND SCHOOL HOLIDAYS

TASK 1.

- (A) -3 / Easter
- (B) -5 / Earth Day
- (C) -2 / European Day of Languages
- (D) -1 / Mother's day
- (E) -6 / Christmas
- (F) -3 / Teachers' Day

TASK 2.

National / public / calendar holidays	School community holidays
St. John's Eve / Midsummer's Eve	The Day of Knowledge and Learning
Independence Day	The Last Bell
Shrove Tuesday	Teachers' Day
Christmas and New Year	Graduation Day
Mother's Day	100 Days
Earth Day	Sports Day
Father's Day	Parents' Day
Easter	European Day of Languages
All Saints' Day	
Black Ribbon Day and the Baltic Way	

TASK 3.

1. F
2. T
3. T
4. F
5. T

TASK 4.

1. Spring break - a vacation from school or college during the spring term, lasting about a week.
2. Thanksgiving day - a day of giving thanks for the blessing of the harvest and of the preceding year.
3. School year - the months of the year during which school is open and attendance is required.
4. Summer vacation - the longest break from school.
5. Weekend - a short break after a working week.

TASK 5.

- (1) break / holiday / vacation
- (2) summer
- (3) countries
- (4) holidays
- (5) weeks
- (6) grades / forms
- (7) days
- (8) months
- (9) place
- (10) southern